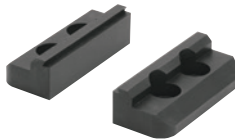


# CP175

# JAWS

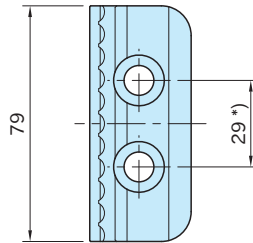


**CP175-08001S** (Serrated)

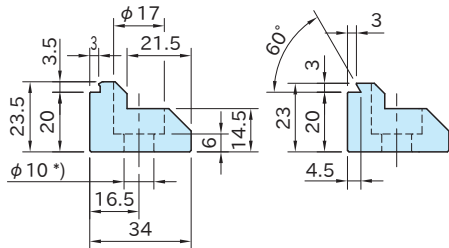


**CP175-08001D** (Dovetail)

Part Number	Type	Weight (g)
<b>CP175-08001S</b>	Serrated	600
<b>CP175-08001D</b>	Dovetail	



Body
SCM440 steel
Quenched & tempered
Black oxide finished



**CP175-08001S**  
(Serrated)  
(2 pcs. as a set)

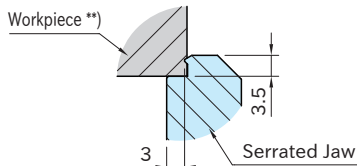
**CP175-08001D**  
(Dovetail)  
(2 pcs. as a set)

## How To Use

Use as jaws of **CP170** Centering Clamp.

### ■ Serrated Jaw

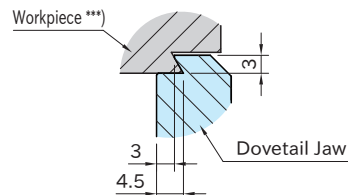
The serrated tips bite into workpiece and clamp powerfully.



\*\* ) Workpiece hardness should be HRC38 or less for use of serrated jaw.

### ■ Dovetail Jaw

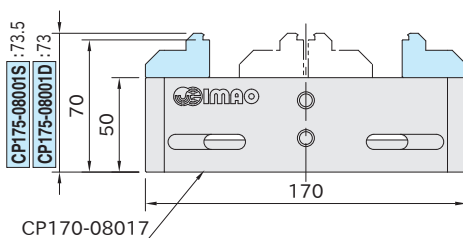
Dovetail jaw holds workpiece at two surfaces and provides positive clamping.



\*\*\* ) Preparation of dovetail groove on workpieces is required.

## Technical Information

### ■ Dimensions of Centering Clamp with Jaws



### ■ Dovetail Groove Preparation

Machine dovetail grooves on workpiece to the specifications below.

