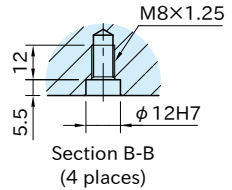
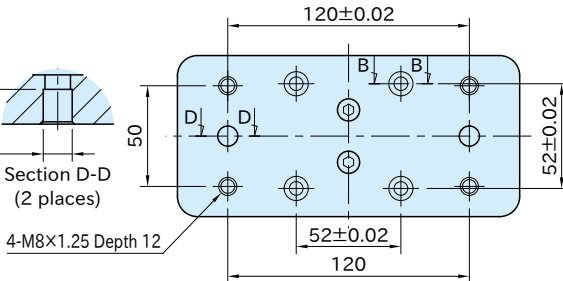
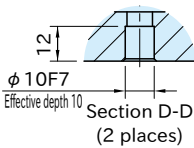
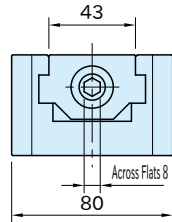
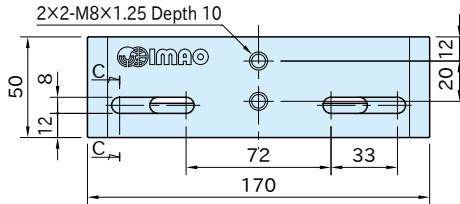
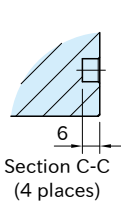
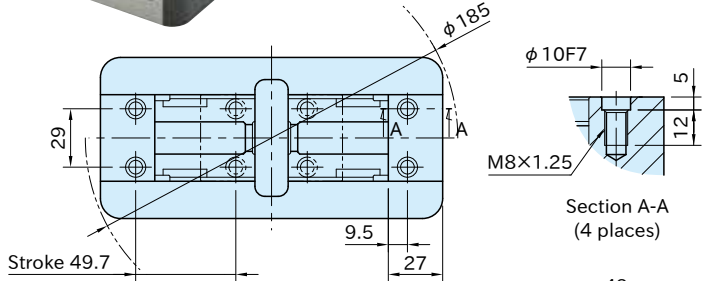


CP170

CENTERING CLAMP



Body	Spindle	Movable Jaw Base
SCM440 steel Induction hardened Black oxide finished Precision ground	SCM435 steel Nitrocarburized	SCM440 steel Black oxide finish



Part Number	Allowable Tightening Torque (N·m)	Weight (kg)	Proper Jaws			
			Serrated Jaws		Dovetail Jaws	
			Part Number	Clamping Force (kN)	Part Number	Clamping Force (kN)
CP170-08017	100	3.9	CP175-08001S	20	CP175-08001D	20

Feature

Manual compact self-centering vise.
Recommended machining allowance is 0.4mm or more per side of the workpiece.

Related Product

- Jaws
- Base Plate

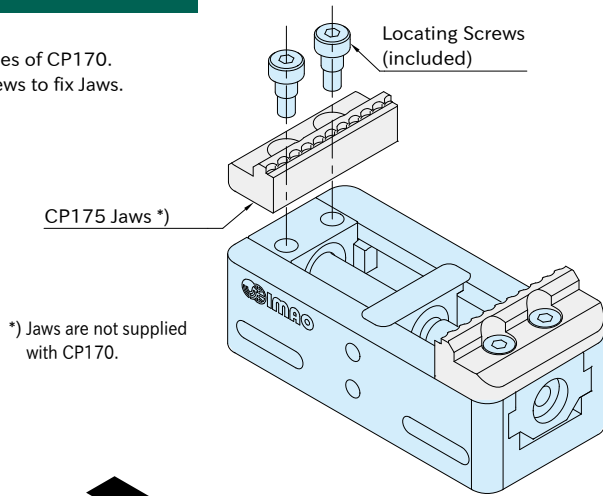
Supplied With

4 pcs. of Locating Screws for Jaws

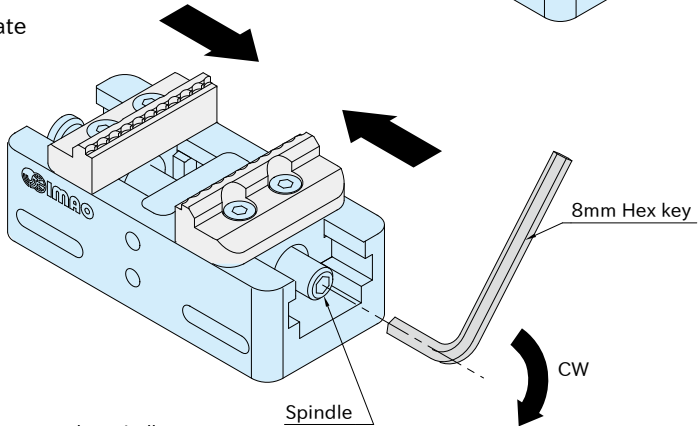
How To Use

How to Mount Jaws

- Mount Jaws to the jaw bases of CP170.
- Use included locating screws to fix Jaws.



How to Operate



- Use a hex key to operate the spindle.
- Both jaws move toward the arrow directions by turning the spindle clockwise.
- Both jaws move against the arrow directions by turning the spindle counterclockwise.

Technical Information

Stroke

