

CP135

SPIRAL CAM CLAMPS



CP135-A

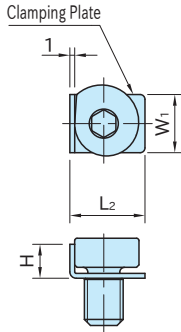


CP135

★ **Key Point**

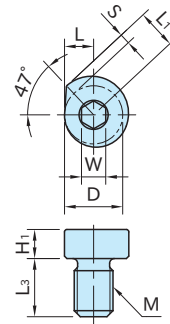
Space saving.
Long clamping stroke.

Spiral Cam Clamp	Clamping Plate
SCM440 steel Black oxide finished HRC33-39	SUS304CSP stainless steel



CP135-A

(With Clamping Plate)



CP135

(Without Clamping Plate)

Part Number	S	L	L ₁	D	M	H ₁	L ₃	W	Allowable Screw Torque (N·m)	Clamping Force (kN)
CP135-06001	1.8	5	6.8	10	M 6×1	5	9	4	7.4	2.2
CP135-08001	2.2	6	8.2	12	M 8×1.25	6	12	5	18	4.7
CP135-10001	2.5	7	9.5	14	M10×1.5	7	15	6	35	7.9
CP135-12001	2.9	8	10.9	16	M12×1.75	8	18	8	60	14

CP135-A (With Clamping Plate)

Part Number	H	W ₁	L ₂	Clamping Plate	Weight (g)
CP135-06001A	6	10	13	CP135-06001P	7
CP135-08001A	7	12	15.5	CP135-08001P	13
CP135-10001A	8	14	18	CP135-10001P	21
CP135-12001A	9	16	20	CP135-12001P	33

CP135 (Without Clamping Plate)

Part Number	Weight (g)
CP135-06001	6
CP135-08001	11
CP135-10001	19
CP135-12001	30

CP135-L **SPIRAL CAM CLAMPS**



One-Touch type is available.

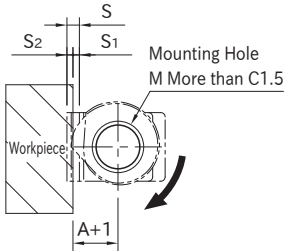
Feature

- The spiral cam provides quick and powerful clamping.
- The simple design keeps cost low and the small size allows more workpieces per load.
- Clamping Plate avoids marring workpiece surfaces.

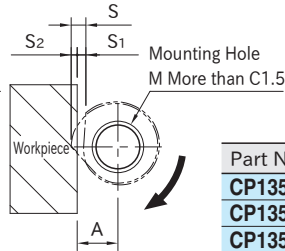
How To Use

■ Mounting Hole Dimension

With Clamping Plate



Without Clamping Plate

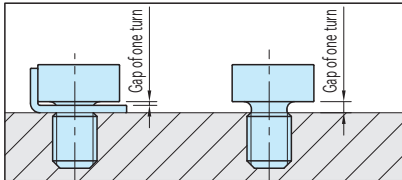


Note: Dimension A and A+1 are the recommended distances between the mounting hole and the end of the workpiece.

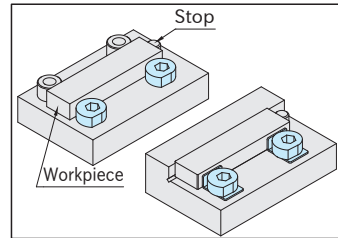
Part Number	A	S	S ₁	S ₂	M
CP135-06001	5.9	1.8	0.9	0.9	M 6X1
CP135-08001	7.1	2.2	1.1	1.1	M 8X1.25
CP135-10001	8.3	2.5	1.3	1.2	M10X1.5
CP135-12001	9.5	2.9	1.5	1.4	M12X1.75

🔪 Note

Tighten Spiral Cam Clamp fully and loosen it about one turn. Then mount a workpiece.

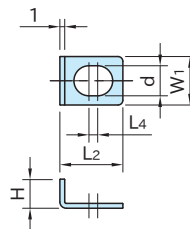
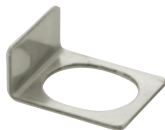


- Tighten clockwise to clamp the workpiece.
- Mount a stop on the right side of the workpiece.



CP135-P

CLAMPING PLATES



Clamping Plate

SUS304CSP
stainless steel

Part Number	H	W ₁	L ₂	d	L ₄	Weight (g)
CP135-06001P	6	10	13	6.2	1.8	1
CP135-08001P	7	12	15.5	8.2	2.2	2
CP135-10001P	8	14	18	10.2	2.6	2
CP135-12001P	9	16	20	12.2	2.9	3