

# OTLK

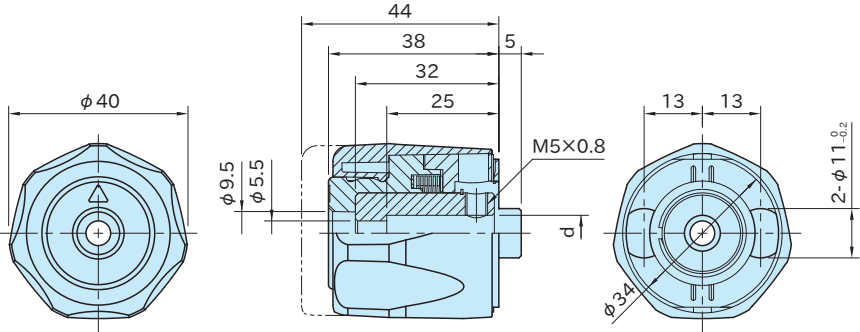
# ONE-TOUCH LOCKING KNOBS



## ★Key Point

Secure locking of spindle with one-touch action!

Housing	Boss	Base	Insert
Polyamide (glass-fiber reinforced) Black, Orange	Polyamide (glass-fiber reinforced) Blue	Polyamide (glass-fiber reinforced) Red	SUS304 stainless steel



Part Number		d	Weight
Black	Orange	(H7)	(g)
OTLK4008-BK	OTLK4008-OG	8	95
OTLK4010-BK	OTLK4010-OG	10	90

## Supplied With

- 1 pc. of M5x15 Stainless-Steel Socket-Head Cap Screw
- 1 pc. of M5x5 Stainless-Steel Cup-Point Socket-Head Setscrew with Locking Agent

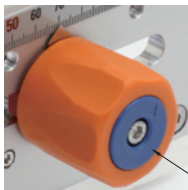
## Feature

- OTLK enables one-touch locking and unlocking of spindle.
- Locking and unlocking of spindle can be perceived with click.
- Red and blue colors indicate whether spindle is locked or unlocked.

Red indicates caution to operate machine.



<Unlocked>

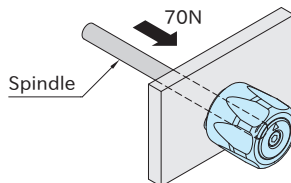


Blue indicates safety to operate machine.

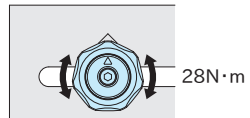
<Locked>

## Technical Information

- OTLK has 50 teeth inside and it engages at every  $7.2^\circ (= 360^\circ / 50)$ .
- OTLK pulls the spindle by the inner spring with 70N force to prevent chattering of the spindle.
- Note: The spindle should be fully inserted into the knob for 25mm.

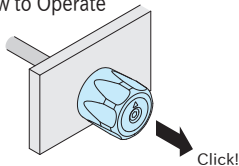


- Allowable moment at locking position:  $28\text{N}\cdot\text{m}$  (Safety Factor = 5)

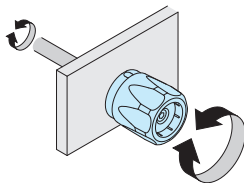


## How To Use

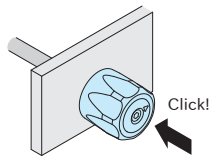
### How to Operate



By pulling the housing until it clicks, the teeth of the knob disengage from the base.

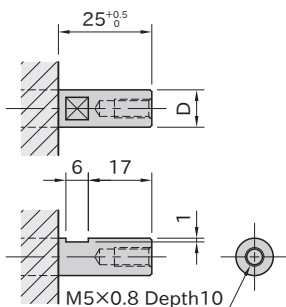


Turn OTLK to rotate the spindle.



By pushing the housing until it clicks, the teeth engage again and lock the rotation of the spindle.

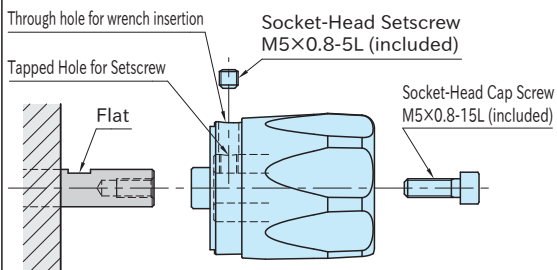
### Mounting Spindle Dimension



Size	D (g6)
<b>OTLK4008</b>	8
<b>OTLK4010</b>	10

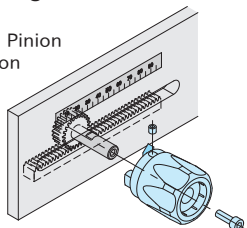
### How to Install

1. Pull the housing and align the through hole on the base and the tapped hole on the insert.
2. Align the flat and the tapped hole on the insert and then mount to the spindle.
3. Fix OTLK temporarily using M5x0.8-15L socket-head cap screw included.
4. Fix OTLK to the spindle temporarily using a setscrew included.
5. Tighten M5x0.8-15L socket-head cap screw fully.
6. Tighten the setscrew fully.

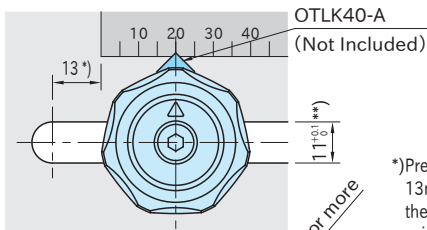
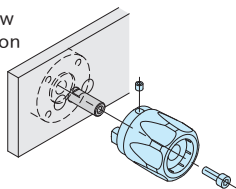


### Mounting Hole Dimension

#### Rack and Pinion Application

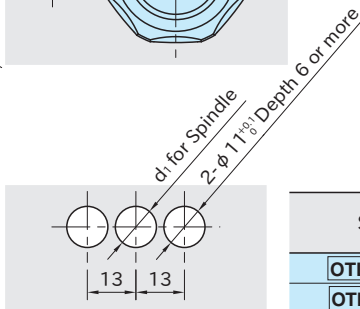


#### Leadscrew Application



\*) Prepare clearance of 13mm or more from the end of a required spindle stroke.

\*\*) Recommended surface roughness is  $1.6 \sqrt{\text{mm}}$  for the inner surface of the slotted hole.



Size	d <sub>1</sub>
<b>OTLK4008</b>	9
<b>OTLK4010</b>	11